

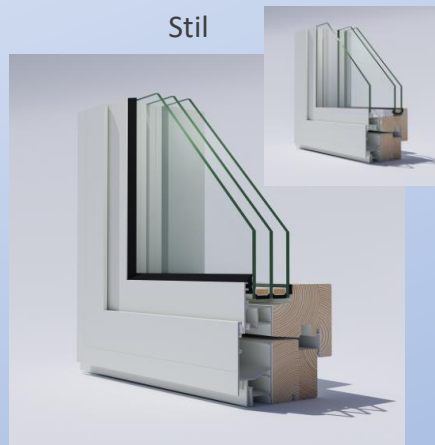
The Product and The Company Presentation  
2020:1

# The LEIAB composite window system - advanced Swedish design

LEIAB is situated in Mariannelund, Sweden, and is one of the market's leading bespoke manufacturers of inward opening windows in timber clad aluminium. Each year, LEIAB manufacture more than 50 000 products - side hung windows, tilt/turn windows, fixed windows, sliding doors and French doors are all made in our factory in Mariannelund, Sweden. We are a company that stay true to our word and always offer generous warranties on all of our products. Numerous customers have already chosen LEIAB windows and doors and you may find our products in more than 10 000 properties in various locations, including more than 200 properties in the UK.

We offer you a choice of four window models where you can combine the frame and sash to create 16 different exteriors, and three interiors. All to ensure that you find the right style for your property. All products are custom made to your specifications, down to the last millimeter. This allows the fitting to be both faster and also much more convenient. The most exposed parts of the window, the frame and outer sash, are made out of strong aluminium, fitted with concealed weep holes. This prevents the window from rotting, and provides you with a product with a superior life span. The interior is made from timber with a high quality decorative finish.

LEIAB was founded in 1982 and we have delivered to the UK for more than 20 years. All models are available as triple glazing, 2+1 glazing or 3+1 glazing.



Stil - As popular now as then

Frame thickness: 95 mm or 245 mm  
 Sound reduction\*: 41-49 dB or 60-69 dB  
 U-value\*: 0.9-1.1 W/m<sup>2</sup>K or 0.8 W/m<sup>2</sup>K

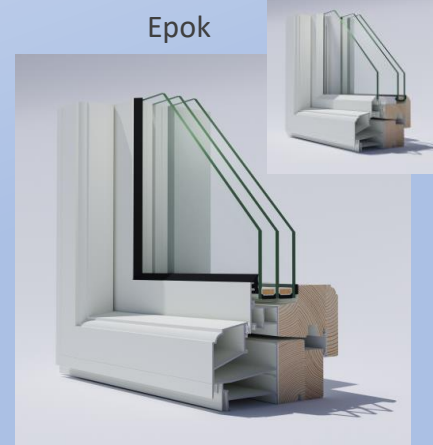
\* Refer to 2+1 glazing



Haga - A pen stroke changed everything

Frame thickness: 100 mm or 250 mm  
 Sound reduction\*: 41-49 dB or 60-69 dB  
 U-value\*: 0.9-1.1 W/m<sup>2</sup>K or 0.8 W/m<sup>2</sup>K

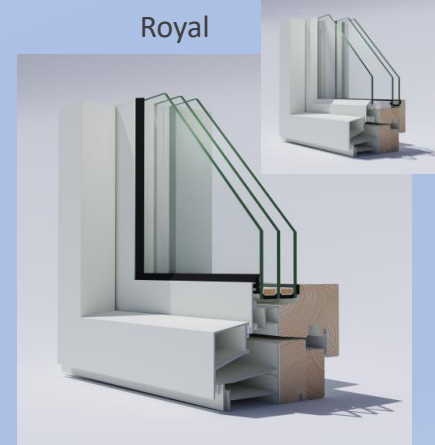
\* Refer to 2+1 glazing



Epok - Pure delight

Frame thickness: 127 mm or 277 mm  
 Sound reduction\*: 41-49 dB or 60-69 dB  
 U-value\*: 1.0-1.2 W/m<sup>2</sup>K or 0.8 W/m<sup>2</sup>K

\* Refer to 2+1 glazing



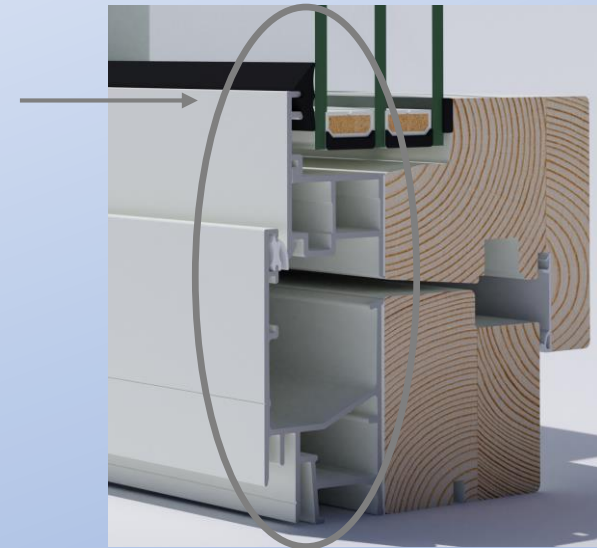
Royal - Our newest model with a clean cut design

Frame thickness: 128 mm or 278 mm  
 Sound reduction\*: 41-49 dB or 60-69 dB  
 U-value\*: 1.0-1.2 W/m<sup>2</sup>K or 0.8 W/m<sup>2</sup>K

\* Refer to 2+1 glazing

## The advantages of our product

- LEIAB's construction is unique. The bonded aluminium/wood ensures that moisture is never in contact with the wood and rain water is led out through the concealed weep holes.
- The interior faces have a smooth wooden finish with a choice of our standard close-grained Scandinavian pines or woods of your choice with a finish to suit your tastes.
- We offer you a choice of four window models where you can combine the frame and sash to create 16 different exteriors, and three interiors. All to ensure that you find the right style for your property.
- Every millimetre is standard at no additional cost. This allows the fitting to be both faster and much more efficient.
- Glazing to your specification. Triple glazing, 2+1, 3+1 or double frame.
- High performance – energy savings and sound reduction products. U-value from 0,8 and sound reduction up to 69 dB.
- A wide range of options – handles, trickle vents, integrated blinds etc.
- Robust ironmongery from Winkhaus who are well represented in the UK.
- SBD – tried and tested. BS 7950, PAS24 and PAS24 2016 (in progress).



## Facts about our product

- The manufacturing materials are sourced from suppliers who have sustainable environmental policies.
- Low maintenance requirements without resorting to harmful waterproofing methods.
- Long life span and generous warranties.
- High delivery precision.
- Ingenious design engineering unique for every project resulting in cost reductions.
- LEIAB is a solid company with a triple-A credit rating for many years.



# The LEIAB composite window system - advanced Swedish design

## Parallel opening and tilt and turn

- With the parallel opening system the sash can be moved 6 mm inwards for ventilation. The sash can also be entirely opened once the handle is in the service position.
- We can also offer our tilt and turn system.



## Life span and Warranties

- 70-year life expectancy and 10-year warranty.
- All LEIAB products are third-party audited.

## Environmentally friendly

- All LEIAB windows are true composite windows with no need of environmentally harmful repellent chemicals on the timber, as the timber is not in contact with rain water or moisture.

## Fire tests

- We have tested products for fire-rating. These include fixed lights and inward opening windows that achieved EI30 (resisting more than 30 minutes of fire). Special fire resistant glass (Pilkington Pyrodur) is required for this rating.



## Inward opening

- All LEIAB windows can be serviced from the interior including reglazing i.e. no need for lifts, scaffolds or external access.
- All window ironmongery is securely fitted to the internal timber face. There is no risk an open sash can fall outwards from the building.

## Factory and LEIAB Headquarters

- All LEIAB products are manufactured in our own plant which houses one of the largest and most modern window factories in Sweden, and that has a manufacturing capacity of 3,500 windows weekly. Today's annual sales of £25m expect to grow to at least £50m. See more about LEIAB Window on [www.leiab.co.uk](http://www.leiab.co.uk).
- A high degree of automation provides both a high consistent product quality, with a high efficiency, that means we can offer all customers high quality products at competitive prices.
- You are welcome to visit us in Mariannelund, Sweden, situated 3 hours driving from Stockholm or Gothenburg.



In the LEIAB window guide on the LEIAB homepage you can see and select different window types in different model lines and different facades as well in different colours.

[See [www.leiab.co.uk](http://www.leiab.co.uk) for a selection of the most common products. All products can be custom made to your specifications].

Start Page / Window Guide

## Window Guide

Window guide | Size guide

**Facade**  
 BRICK | CEMENT RENDER | WOOD

**Facade colour** [SHOW] [RESET]

**Model line**  
 STIL | HAGA | EPOK | ROYAL

**Window colour** [SHOW]

**Window type**  
 SINGLE LIGHT | WIDE MUNTIN | FLOATING MULLION  
 TWO LIGHTS | OFF CENTRE POST

**Door type**  
 GLAZED | GLAZING BAR | MID RAIL | INFILL PANEL

**Special products**  
 SPECIALS

[SHOW]

Showing 9 of 9

[COMPARE]

(0 product(s) selected)

|   |  |  |   |
|---|--|--|---|
| <br>Model: Haga<br>Window type: Single light<br>Window colour: White    | <br>Model: Haga<br>Window type: Two lights<br>Window colour: White | <br>Model: Haga<br>Window type: Floating mullion<br>Window colour: White | <br>Model: Haga<br>Window type: Wide muntin<br>Window colour: White |
| <br>Model: Haga<br>Window type: Off centre post<br>Window colour: White | <br>Model: Haga<br>Door type: Mid rail<br>Window colour: White     | <br>Model: Haga<br>Door type: Glazing bar<br>Window colour: White        | <br>Model: Haga<br>Door type: Infill panel<br>Window colour: White  |



Showing 200 of 756 [COMPARE] (0 product(s) selected)

|   |  |   |   |
|---|--|---|---|
| <br>Model: Royal<br>Window type: Single light<br>Window colour: Brown   | <br>Model: Royal<br>Window type: Single light<br>Window colour: Grey   | <br>Model: Royal<br>Window type: Single light<br>Window colour: Red   | <br>Model: Royal<br>Window type: Single light<br>Window colour: Black |
| <p><b>Royal</b></p> <p>Model type: Royal<br/>       Window type: Single light<br/>       Window colour: Grey<br/>       Wall type: Brick<br/>       Frame depth: 128 mm</p> <p>[Go to reference] [Go to reference] [Go to reference]</p> <p>[Go to product]</p> |  |   |   |
| <br>Model: Royal<br>Window type: Single light<br>Window colour: White   | <br>Model: Royal<br>Window type: Single light<br>Window colour: Yellow | <br>Model: Royal<br>Window type: Single light<br>Window colour: Brown | <br>Model: Royal<br>Window type: Single light<br>Window colour: Green |
| <br>Model: Royal<br>Window type: Single light<br>Window colour: Red   | <br>Model: Royal<br>Window type: Single light<br>Window colour: Grey   | <br>Model: Royal<br>Window type: Single light<br>Window colour: Green | <br>Model: Royal<br>Window type: Single light<br>Window colour: Grey  |

## Material Store

Project name: Material Store  
 Client: Interserve and Invest Mag Ltd  
 Year of construction: 2016-2018  
 Window model: Royal  
 Location: London  
 Address: Blyth Road  
 Type: New construction  
 Number of products: 1700



Double Frame

We have had the pleasure of supplying windows and patio doors for approximately 190 apartment units in one of London’s new exciting residential areas; The Material Store in Hayes. Comprising a total of four buildings, including an 11 storey high rise, the first batch of windows were delivered in March 2017 and the final delivery was in 2018.

The unique and challenging feature about this area in London is where it is situated. A mere five kilometres from Heathrow Airport, and with railway lines running just outside the apartment units, we knew that we had to deliver maximum sound reductions in our window system while still maintaining a stylish design. As can be seen from the photos this has been achieved.

In order to meet the Employers high acoustic requirements and to confirm the design, we conducted various tests on window units identical to the ones to be installed in the apartments prior to going into production They had to be able to reduce very specific, low sound frequencies on account of the heavy duty diesel locomotives passing by just outside. Our design team, alongside with our suppliers, devised an elegant solution involving a double frame system, which provides the required sound reduction and also allows for easy ventilation. With the double frame construction, sound reduction can reach levels as high as Rw 69 dB and the frame depth can range from 175-285 mm in accordance with the Employers requirements.

Most of the windows and patio doors are quite large, the ones greatest in size measure a width of 1200 mm and a height of 2500 mm. Out of the total 1700 window and patio door units, approximately 500 used a double frame construction.



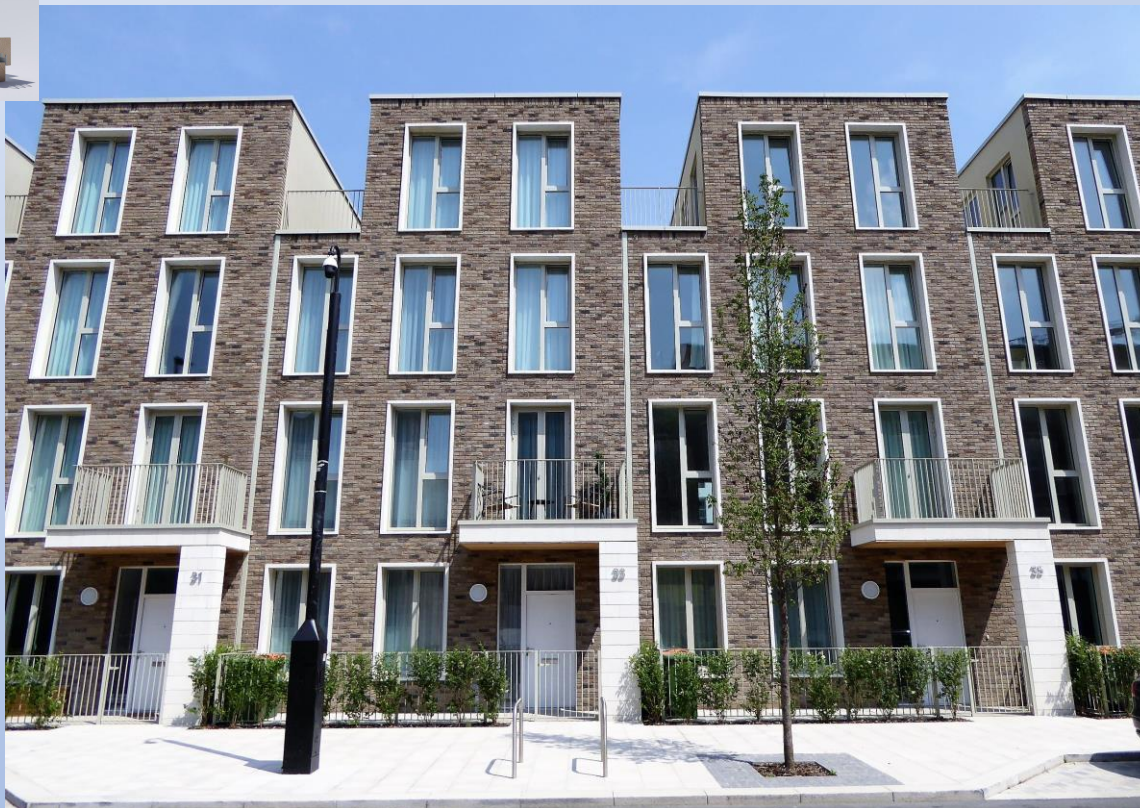
## Royal Wharf Townhouses

Project name: Royal Wharf Townhouses  
 Client: Ballymore Group  
 Year of construction: 2015-2016  
 Window model: Royal  
 Location: London  
 Address: Barrier Point Road  
 Type: New construction  
 Number of products: 1165



Leiab were involved in one of the largest developments in recent years in London. One striking feature about the townhouses at Ballymore’s development at Royal Wharf, is the generous ceiling height. For the person living in the unit, this means a feeling of light and space, but for a window manufacturer it is a challenge to be met. Designing windows and patio doors with a minimum height of 2500 mm with added requirements such as safety glazing and excellent noise reduction, meant that the products need to perform flawlessly over a long period of extended use, while carrying a weight of roughly 300 kilos. The frame model that was eventually used for the products, featuring concealed weep holes, was custom designed for this project and is now one of our most popular designs.

We have successfully delivered more than 1100 windows and patio doors from the new Royal frame concept for various properties within the Royal Wharf area.



## Maiden Lane

Project name: Maiden Lane  
Client: John Sisk & Son Ltd  
Year of construction: 2014-2017  
Window model: Stil  
Location: London  
Address: Maiden Lane  
Type: New construction  
Number of products: 2900



For this project, located in an exclusive area in the heart of London, we had to deliver high quality products with excellent noise reduction, while also providing venting possibilities. Several of the apartment units are located close to the hustle and bustle of the streets nearby and the windows are able to reduce the low frequency noise. Another design feature which was delivered for a number of the windows are the integrally fitted louvres, which provide the HVAC ventilation requirements.

More pictures to be found on the LEIAB homepage:  
<https://www.leiab.co.uk/en/references/r/11068/john-sisk---son-ltd/maiden-lane/>





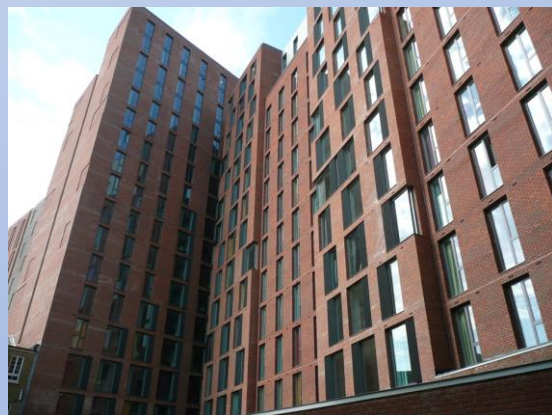
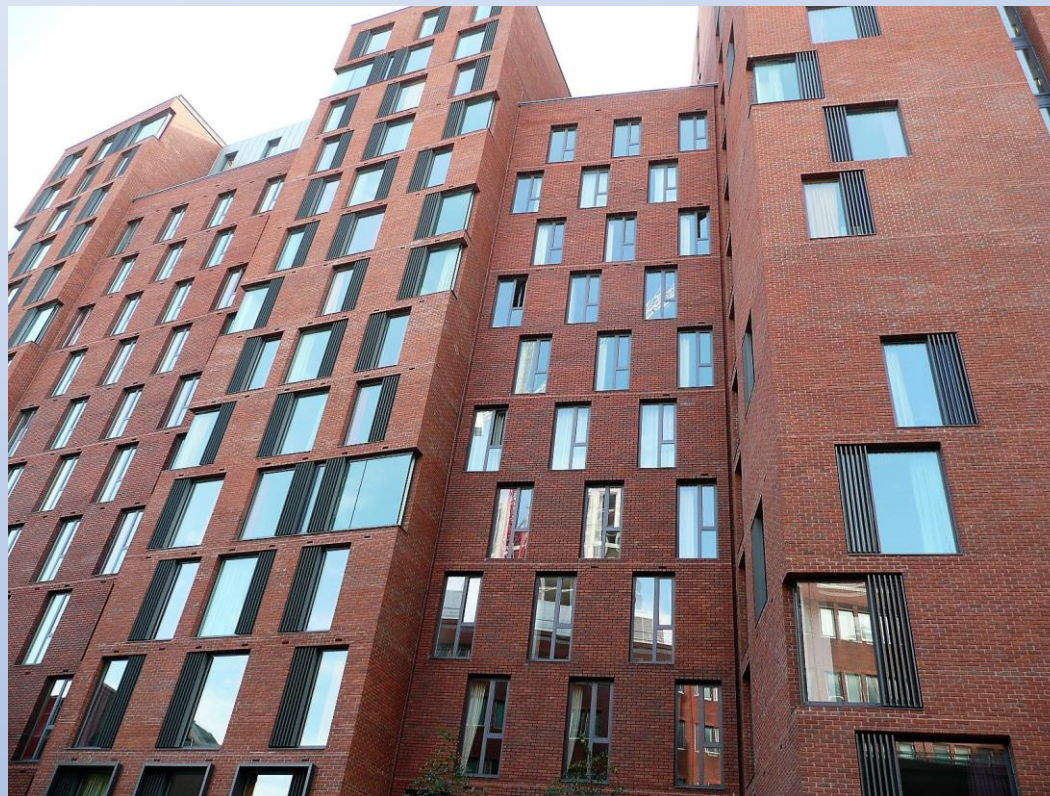
## East Road

|                       |                          |
|-----------------------|--------------------------|
| Project name:         | East Road                |
| Client:               | Ardmore Construction Ltd |
| Year of construction: | 2011-2013                |
| Window model:         | Stil                     |
| Location:             | London                   |
| Address:              | 10 East Road             |
| Type:                 | New construction         |
| Number of products:   | 1200                     |

For this project, also located in the heart of London, we had to deliver high quality products with noise reduction and a high safety level, while also providing venting possibilities. The project is for exclusive student accommodation with apartments designed for compact living.

More pictures to be found on the LEIAB homepage:

<https://www.leiab.co.uk/en/references/r/9773/ardmore-construction-limited/10-east-road--north-block/>



# References in London

The LEIAB composite window system - advanced Swedish design



Double Frame

Material Store, 1700 units



Lanmor house, 120 units



Soho, 34 units



Double Frame

M.R. site hotel, 280 units



M.R. site residential, 540 units



Barking building 3, 2100 units



Stonebr. Hills.H, 440 units



Imperial Wharf, 1300 units



Moreton Street, 100 units



Evelyn Street, 190 units



Century House, 1100 units



Royal Wharf, 1200 units



East road, 1200 units



Haggeston, 670 units



Westgate Centre, 240 units



Double Frame

Maiden Lane, 3000 units



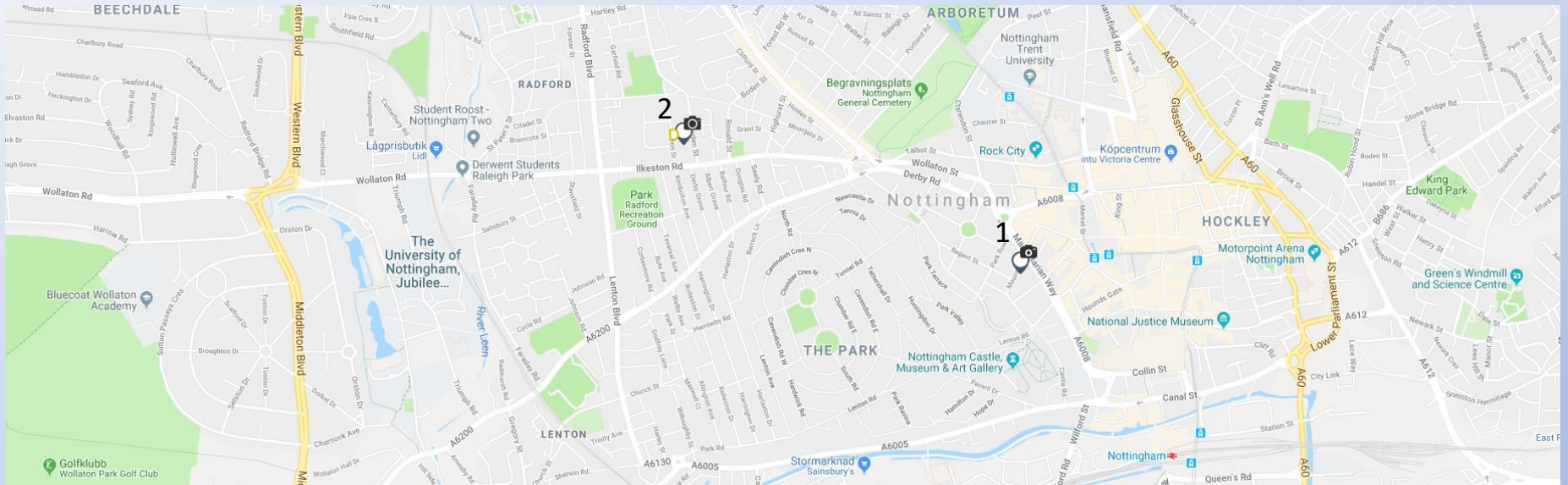
Hornsey Road Baths, 1920 units



Barking, 1000 units

# References in Nottingham

The LEIAB composite window system - advanced Swedish design



1  
Newtown House, 1015 units, 2015-2016  
Renovation  
Mabec Properties

More pictures to be found on the LEIAB homepage:  
<https://www.leiab.co.uk/en/references/r/11537/mabec-properties/newtown-house/>



2  
Radford Mill, 172 units, 2018-2019, Mabec Properties  
Renovation of the large block once was used to make Spitfire engines and additionally new construction for residential for some 483 bed spaces.

More pictures to be found on the LEIAB homepage:  
<https://www.leiab.co.uk/en/references/r/12247/city--country-property-management/radford-mill/>





## Contact us

LEIAB Windows  
 Fagersjogatan 3  
 S-598 97 Mariannelund  
 Sweden  
 tel.: +46 496 707 00  
 fax: +46 496 211 60  
 email: info@leiab.se  
 www.leiab.co.uk

Ever since the outset in 1982, Sweden has been LEIAB's principal market. 80 percent of our turnover derives from there. Over the years we have demonstrated that we are a partner to be trusted, and we have secured a large number of regular collaborative partners. We have experienced extremely positive development of the exports over the last years. The latest years more than 20 percent of our annual sales of approx. £25m were export, primarily to England but also to Norway and Denmark. Our objective is to continue to grow in the English market.

## The hard advantages of our composite system

- The product's construction is unique. The bonded aluminium/wood ensures that moisture is not in contact with the woods and rain water is led out through the concealed weep holes.
- The interior faces are made from timber with a high quality decorative finish.
- We offer you a choice of four window models where you can combine the frame and sash to create 16 different exteriors, and three interiors. All to ensure that you find the right style for your property.
- Every millimetre is standard at no additional cost. This allows the fitting to be both faster and also much more convenient.
- Glazing to your specification. Triple glazing, 2+1, 3+1 or double frame.
- High performance – energy savings and sound reduction products. U-value from 0,8 and sound reduction up to 69 dB.
- A wide range of options – handles, trickle vents, integrated blinds etc.
- Robust ironmongery from Winkhaus who are well represented in the UK.
- SBD – tried and tested. BS 7950, PAS24 and PAS24 2016 (in progress).

## Facts about our composite system

- The manufacturing materials are sourced from suppliers who have sustainable environmental policies.
- Long life span and generous warranties.
- High delivery precision.
- Ingenious design engineering unique for every project resulting in cost reductions.
- Numerous customers have already chosen the composite windows and doors and you may find our products in more than 10 000 properties in various locations, including more than 200 properties in the UK. Annual manufacturing of more than 50 000 inward opening windows, fixed lights and outward and inward patio doors.
- The manufacturer is a solid company with triple-A rating for many years.